



# nbn™ setup guide

For users without pay TV  
or cable internet

Hybrid Fibre Coaxial (HFC)

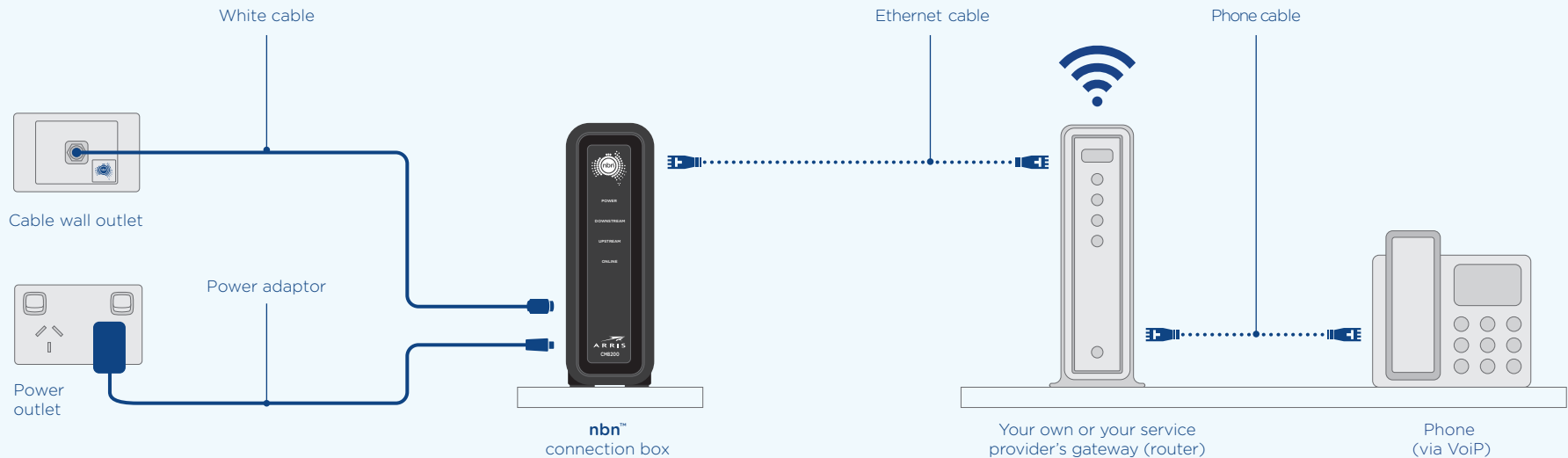


Turn over booklet if you have pay TV or cable internet

# Congratulations on switching to the nbn™ network

# You'll soon be able to enjoy the benefits of a fast, reliable internet network

## Common connection without pay TV or existing cable internet

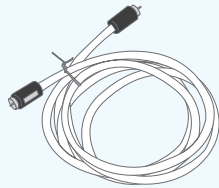


— Supplied cables      ..... Other cables (not supplied)

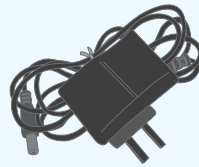
## Equipment in your connection kit



**A** nbn™ connection box  
(ARRIS Touchstone™  
CM8200B)



**B** White cable  
(Remove plastic caps before use)

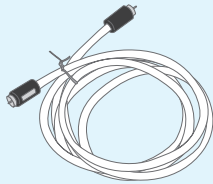


**C** Power adaptor

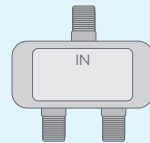


**D** nbn™ wall outlet sticker

These items are not required – store for future use



Spare white cable

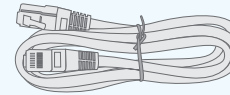


Splitter

### nbn™ supplied equipment is the property of nbn

This means it must not be removed from your premises (even if you move). If you need help with your service, cables or wiring, contact your service provider.

## Other equipment required (not supplied by nbn)



**E** Ethernet cable



**F** Your own or your service provider's supplied gateway (router)

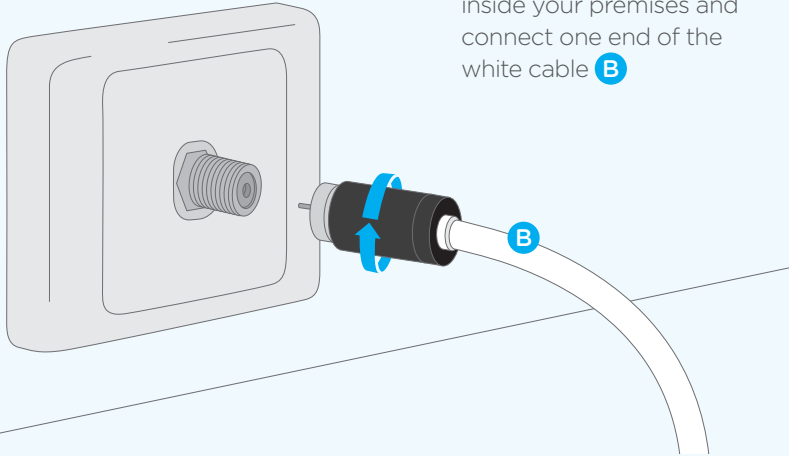
The equipment and accessories shown above may differ from those supplied by your service provider. Refer to your service provider's equipment instructions.

If you are missing any of the above equipment from your connection kit, contact your internet service provider to rectify the issue.

The service provided to you is the responsibility of your phone or internet service provider. All other cables and equipment are the responsibility and property of you or your phone or internet service provider. This includes the internal wiring required for additional internal phone outlets within your home or business.

# 1 Find your cable wall outlet

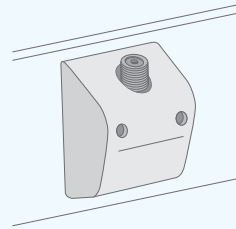
Locate your wall outlet inside your premises and connect one end of the white cable **B**



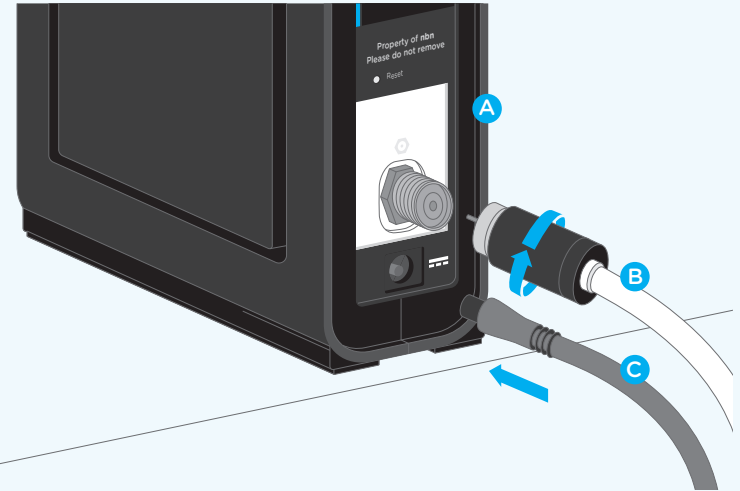
## Which cable wall outlet is the right one?

If you have multiple wall outlets, you'll know if the correct one is connected to the **nbn™** network when all four lights on the front panel of the **nbn™** connection box turn solid green (see more on page 7).

Your cable wall outlet may also look like this and be branded with logos of other network owners



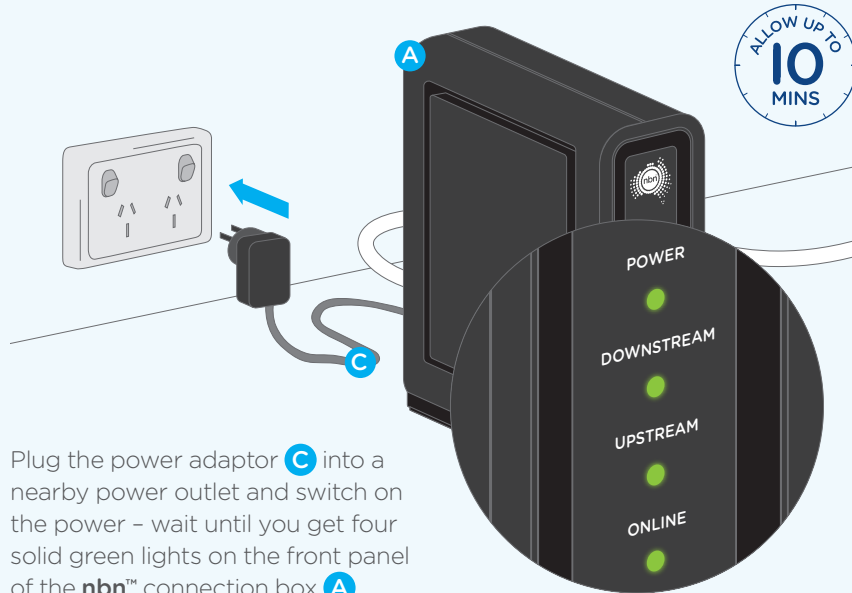
# 2 Connect the nbn™ connection box



Connect the other end of the white cable **B** to the back of your **nbn™** connection box **A**

Connect the power adaptor **C** to the back of the **nbn™** connection box **A**

## 3 Activate the nbn™ connection box



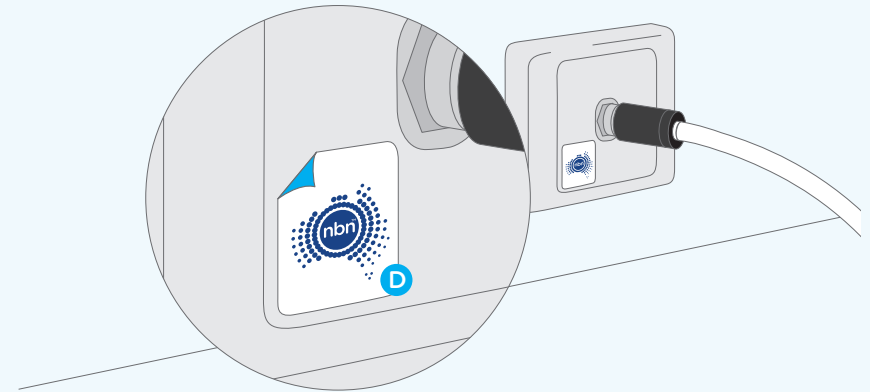
Plug the power adaptor **C** into a nearby power outlet and switch on the power – wait until you get four solid green lights on the front panel of the **nbn™** connection box **A**

It will take up to 10 minutes for the lights to stop flashing – do not unplug your connection box during this process

### No solid green lights?

Check that the white cable is connected to the wall outlet securely. If it is, and there are still no solid green lights, try connecting your **nbn™** connection box to another cable wall outlet. If this doesn't work, contact your service provider.

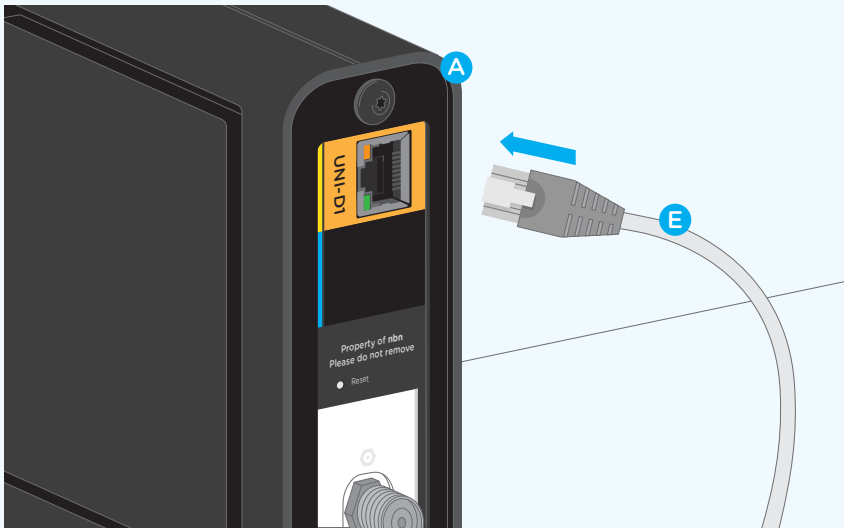
## 4 Label your cable wall outlet



Once you get four solid green lights, stick the **nbn™** sticker **D** to the cable wall outlet to help you identify it in the future

## 5 Connect to your other equipment

Insert an Ethernet cable **E** into the yellow panel on the back of the **nbn™** connection box **A**



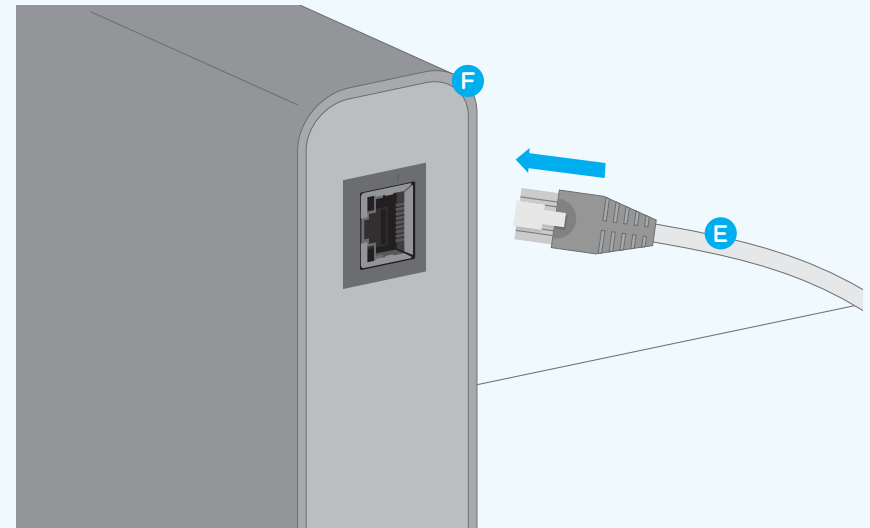
### Only connect compatible equipment

Make sure only compatible equipment, such as your service provider's gateway (router), is connected to your **nbn™** connection box. Talk to your service provider for more information.

## 6 Connect your service provider's gateway (router)

Connect the other end of the Ethernet cable **E** to the back of your service provider's gateway (router) **F** – you can then connect the gateway (router) to other equipment such as your computer or phone

Your service provider's equipment may differ from the illustration below



### See your service provider's equipment guide for further instructions on:

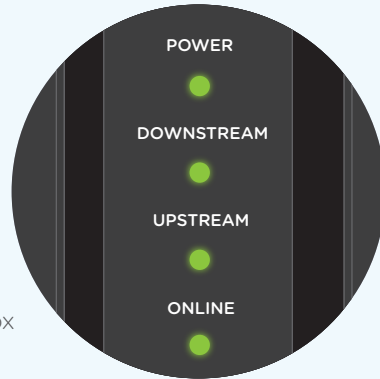
- Connecting your **nbn™** connection box to the gateway (router)
- Connecting your landline phone and/or other equipment
- Making sure all your equipment is connected and working correctly

# What the nbn™ connection box green lights mean

Your **nbn™** connection box has four indicator lights on the front panel

During the startup sequence, the **nbn™** connection box lights will flash

Once they become solid green, the service is ready



## POWER

Indicates that power is available to the box

## DOWNSTREAM

Indicates downstream connectivity

## UPSTREAM

Indicates upstream connectivity

## ONLINE

Indicates **nbn™** network connection

**Your connection box may occasionally update itself**

Downstream/Upstream lights will flash – allow up to 10 minutes.

# Troubleshooting

Having trouble with your **nbn™** connection? Try this checklist:

- Your **nbn™** connection box power cord is plugged in firmly at both ends
- The white cable is connected securely between your **nbn™** connection box and the wall outlet
- The four indicator lights on your **nbn™** connection box are solid green (if they're not, contact your service provider)
- You have read your service provider's guide for further instructions
- The white cable is not pinched, kinked or bent (this can cause a break or short in the cable)

Contact your service provider for more troubleshooting tips and FAQs or visit [nbn.com.au/hfc](https://nbn.com.au/hfc)

# Common questions

## Who do I contact if I need help?

If you have any questions or want to report a fault, please call your service provider in the first instance, or visit [nbn.com.au](http://nbn.com.au)

## What happens to my nbn™ connection box and other equipment if I move?

Your nbn™ supplied equipment is the property of nbn and should not be removed from the premises in which it was installed. Contact your service provider for advice on connecting services at your new premises.

## How do I care for my nbn™ connection box?

You can wipe it with a dry cloth – do not use a damp cloth on equipment or cables.

## I have moved to a different premises that has an nbn™ connection box, how do I get it working?

Please contact your service provider to arrange for a new service to be activated on the nbn™ network.

## Will my monitored security system work over the nbn™ network?

Monitored security systems may operate over the nbn™ network. However, if you would like to use an existing system, you should check with your security provider to ensure that it is compatible with the nbn™ network. You should test your alarm on the day your service over the nbn™ network is activated. For more information, visit [nbn.com.au/alarms](http://nbn.com.au/alarms)

## Can I connect my phone to a gateway (router) provided by my phone company?

Yes. Ask your phone service provider how your phone can connect to a gateway (router) that is not an nbn™ connection box.

## Can I install cabling myself?

If you choose to have additional phone or data cabling installed through wall, floor or ceiling cavities, it must be done by an ACMA registered cabler. Your service provider may be able to recommend a registered cabler in your area.

## What if I accidentally damage my nbn™ supplied equipment?

Please contact your service provider to have it repaired (charges may apply).

## Will my equipment work during a power blackout?

The nbn™ network will not work during a power blackout, so you should consider having an alternate form of communication handy – such as a charged mobile phone. If you have a safety-critical device such as a medical alarm, fire alarm or lift emergency phone, please speak to your equipment provider about alternate solutions.

## If I'm going away, can I unplug my service to save power?

nbn recommends leaving your nbn™ supplied equipment powered at all times.

## Can I plug my nbn™ connection box into a power board?

It is preferable that your nbn™ connection box is connected to a fixed power point. However, if this is not possible, it can be plugged into a double adaptor, extension cord or power board, as long as they are safe.

## Is my nbn™ connection box and white cable(s) safe?

Yes. Your nbn™ connection box only uses fixed connections, which are not designed to emit any wireless radiation. However, as white cables conduct electricity, you should never disconnect, bend or tamper with the connection.

## I have a medical alarm, what should I do?

If you use a medical alarm, or care for someone who does, you'll need to register it with nbn. This will help us identify premises where support may be needed to help minimise potential breaks in service. To register, visit [nbn.com.au/medicalregister](http://nbn.com.au/medicalregister) or call **1800 227 300**, 9am – 5pm AEST, Mon – Fri. You should also contact your medical alarm provider.